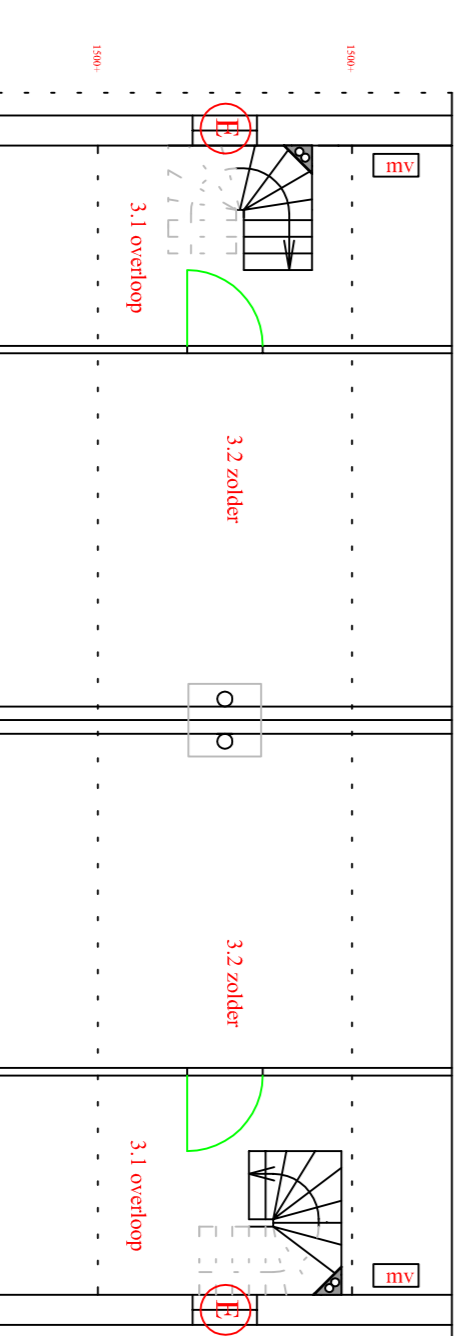
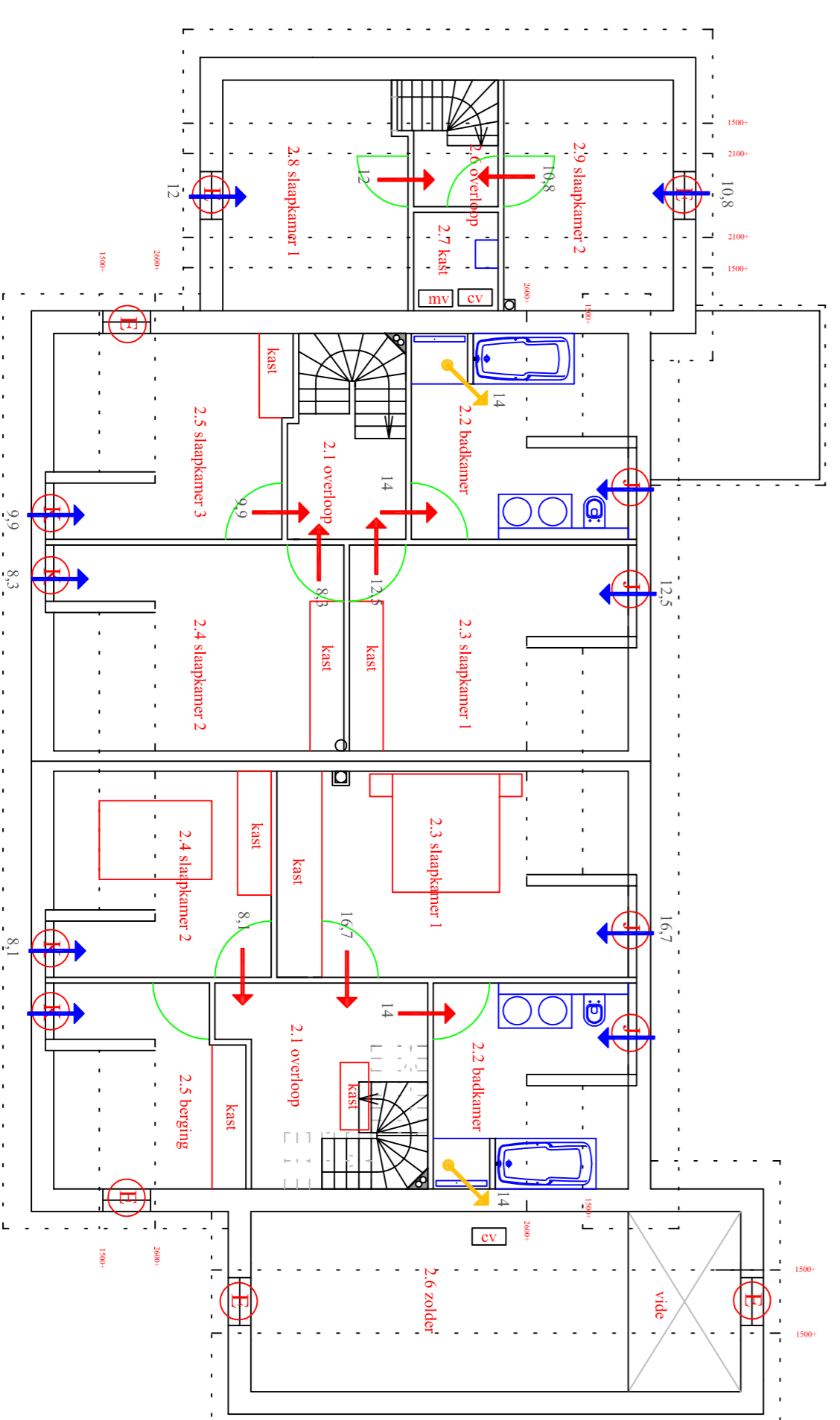
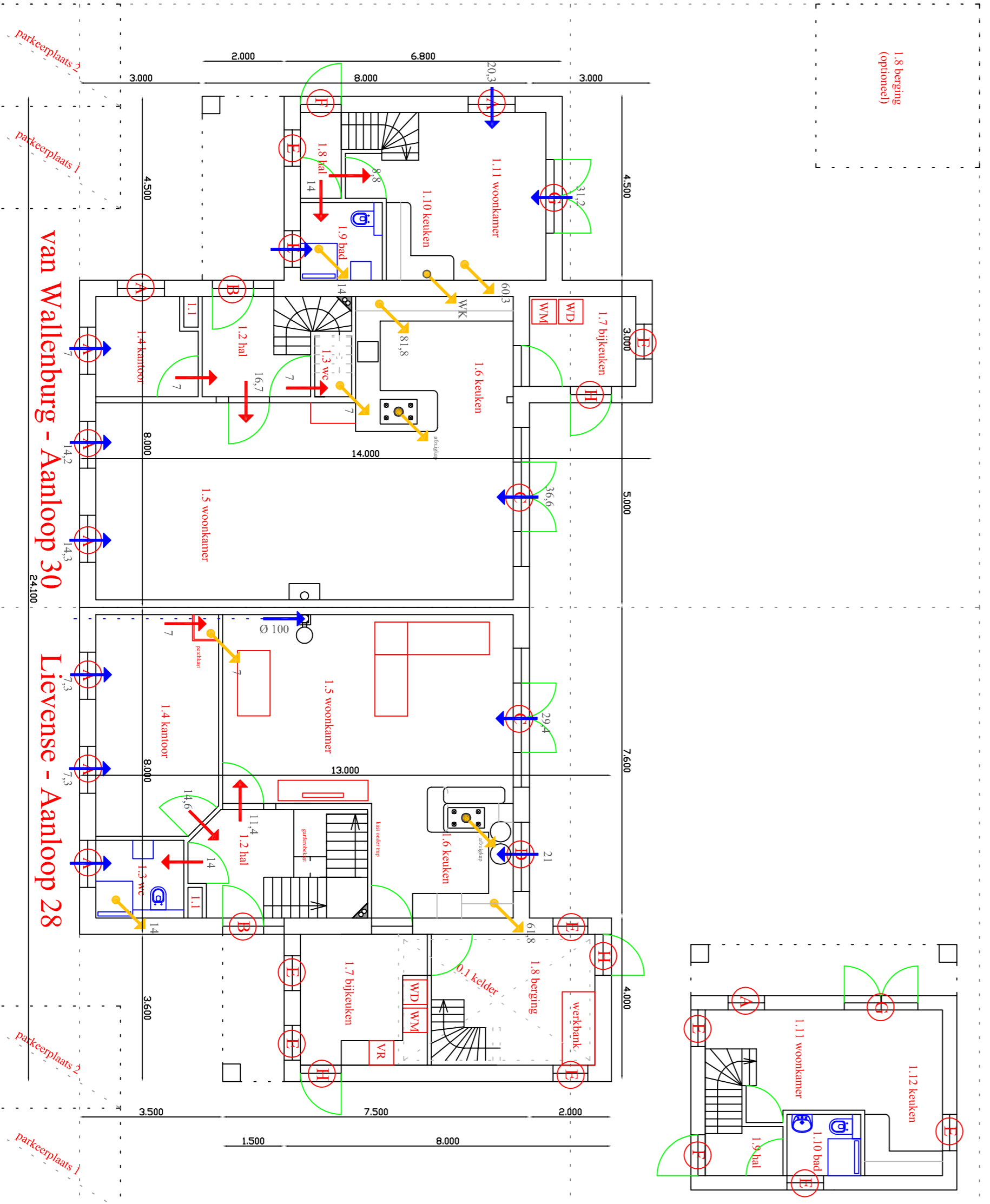


bijgebouw
Lievense

zomerhuis
Wallenburg

hoofgebouw

kelder
Lievense



onderdeel: woning

Werk: nieuwbouw 2/1 kap

v. Wallenburg / Lievense, Aanloop 30/28 te Domburg

datum: 13.06.08

getekend HL

schaal 1:100

blad S-02